

Bolinas Hearsay News

Monday, October 10, 2011

46 ¢ + tax

WHAT'S HAPPENING?

Monday, October 10

COLUMBUS DAY HOLIDAY

Post office and many other offices closed.

MESA PARK

Board of Directors meeting, Firehouse, 7pm

Tuesday, October 11

SAVE THE STAGE!!!!

Public Meeting @ BCC, 4-6pm; There is a proposal to cancel the "Coastal Route" which is the only public transportation to Pt. Reyes from Bolinas.

FULL MOON

full 7:06pm. Moonrise 6:14pm

Thursday, October 13

COAST CAFE CONCERT SERIES

Live music, food & drink specials @ Coast Cafe, 7pm

JEFFERY MANSON BAND

New band showcase @ Smiley's, 8:30pm

Friday, October 14

EMMA LEE PROJECT

Live singer-songwriter @ Smiley's, 9pm

Saturday, October 15

TOM FINCH BAND

Live rock & blues @ Smiley's, 9pm

Sunday, October 16

HEALTH AND FIRE SAFETY DAY

11am-3pm, Bolinas Fire Department and Bolinas Community Health Center

Monday, October 31

STINSON-BOLINAS COMMUNITY FUND

deadline for grant applications. Info: belle-wood@att.net

HALLOWEEN

Trick or treat!

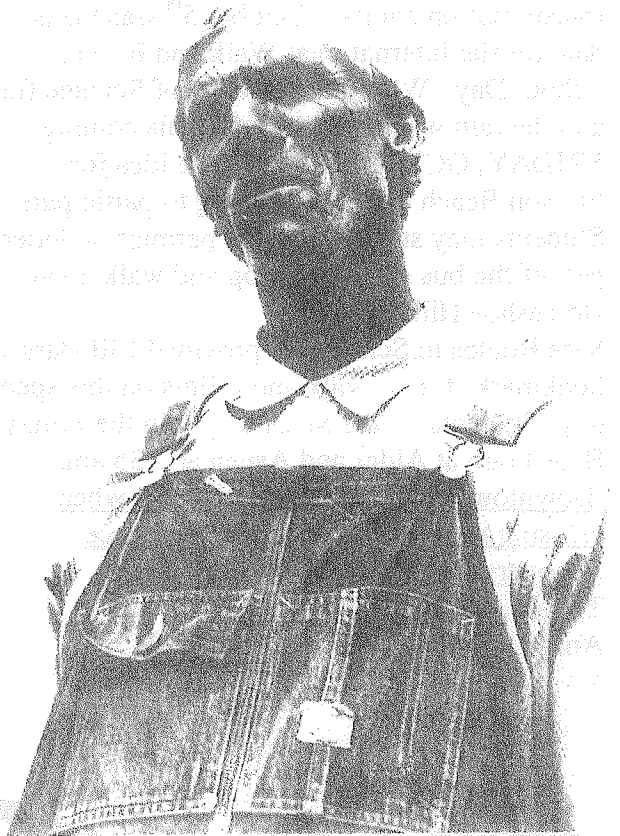


photo of Arkansas sharecropper by Dorothea Lange, from "Old Time String Band Songbook"

HAPPY HAPPY BIRTHDAY!!!

October 10: Jane Robinson
Annie Feld
Harriet Kossman
Nick Yeargin

October 11: John Thorpe (Shao)
Carol Negro
Noah Brooks
Claudia Pruess
Cathy Zontek

October 12: Matt Ehmann
Lewis MacAdams

October 13: Julia Rose Cummings
Phil Butler
Lynn Copp
Steve Auer
Roger Sierra

October 14: Annie Crotts

October 15: Jerry Bohlman
Jason Rodgers
Angela Rollins
Kirby Lee
Howard Meyer

October 16: Kiowa Broek



pasteup: Ned Riley
books/ads: June McAdams
press: Jeff Manson

FRIDAY OCTOBER 14th INTERNATIONAL WALK and ROLL TO SCHOOL DAY!

Bolinas-Stinson Students are participating in a worldwide effort to promote and practice healthy transportation habits. October 5th was the actual date for the International Walk and Roll to School Day. With the Academy of Science field and the rain we are observing it this coming FRIDAY, OCTOBER 14th. One idea for Stinson Beach students wanting to participate: Students may submit a parent permission letter to get off the bus at the last stop and walk down Horseshoe Hill to school.

Safe Routes to School has provided Clif Bars and bookmarks for all walk and rollers on this special day! Students on the Mesa may join the Friday Bike Train at Alder and Aspen at 7:35 am.

Downtown students must be careful when crossing to the bike path at the Resource Recovery Center.

Thanks,
Anny



**The Dance Palace
Community Center**
503 B St., Pt Reyes Station

For more information, to volunteer,

COMMISSION ON AGING MEETING

Topic: Aging in Place in Rural Communities
Thursday, October 13, 9:00-11:30 a.m.

POINT REYES BOOKS PRESENTS: MARK HERTSGAARD, AUTHOR OF "HOT: LIVING THROUGH THE NEXT 50 YEARS ON EARTH" IN CONVERSATION WITH CHRIS DESSER

Benefit for the Mesa Refuge Retreat
Mark Hertsgaard has written for "The New Yorker," "Vanity Fair," and "Time," and is author of four books, including "Earth Odyssey." Long before Al Gore and the rest of the world were paying any attention to the issue of global warming, "The Nation's" environmental correspondent, Mark Hertsgaard, was travelling the world attempting to understand this largely misunderstood phenomenon and the threat it posed to our existence. This event will celebrate his new book, "HOT: Living Through the Next 50 Years on Earth."

Friday, October 14, 7:00 p.m. (Pre-event 6:00 p.m. reception at bookstore)

Tickets: \$15.00 at door, bookstore or
www.ptreyesbooks.com

BLOOD CENTERS OF THE PACIFIC BLOOD DRIVE

If you are age 17 or older, weigh at least 110 pounds, and are in good health, please consider making a donation. You will be contributing to a vital community service.

Sponsored by West Marin Community Resource Center, 663-8361

Saturday, October 15, 8:00 a.m.-2:00 p.m.

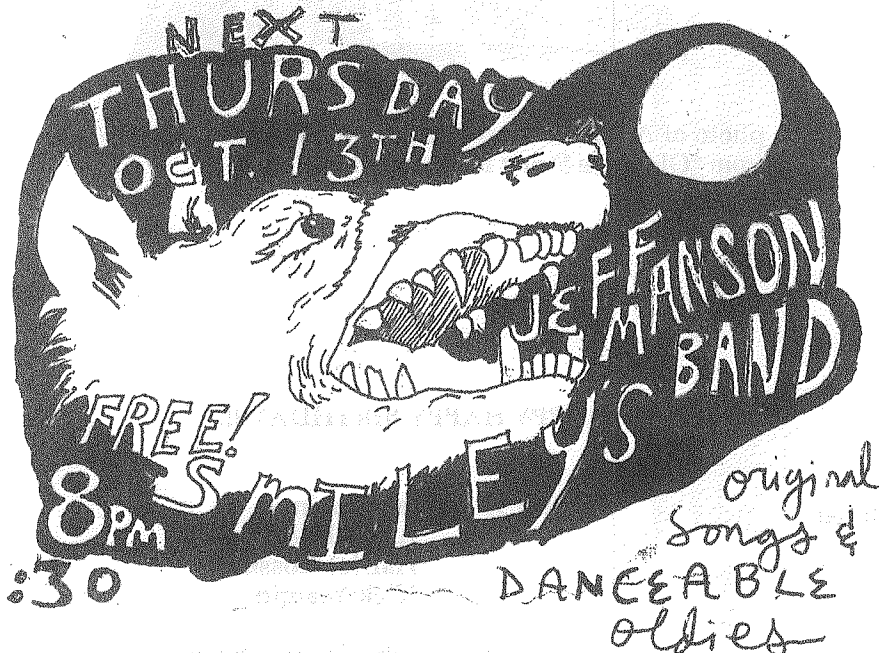
EAC 40TH ANNIVERSARY CELEBRATION

Join EAC as it celebrates 40 years of protecting the diverse habitats, wildlife, and rural character of West Marin. This family-friendly event will include a '70s-themed dance party, great music and libations, and a special tribute to Catherine Caufield and her leadership over 13 years to ensure the protection of the Tomales Dunes. We hope to see you there!

Saturday, October 15, 5:00 p.m. / \$5

POINT REYES BOOKS PRESENTS: MICHAEL ONDAATJE, AUTHOR OF THE CAT'S TABLE

Michael Ondaatje is one of the world's foremost writers: his artistry and aesthetic have influenced an entire generation of writers and readers. He is the author of four collections of poetry and four novels, including "The English Patient." This event will celebrate his much-anticipated forthcoming novel, "The Cat's Table." Sunday, October 16, 6:30 p.m.



Smiley's POOL TOURNAMENT

Every Tues. Night, 7:30 pm

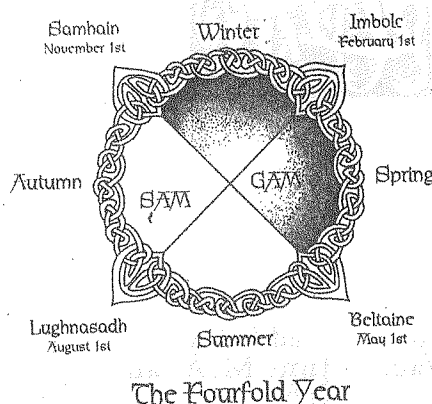
1st Prize \$75-\$100

2nd Prize \$25

3rd Prize Smiley's Cash

\$5 buyin

41 Wharf Rd. 868-1311



SAVE THE STAGE!!!!

MEETING AT BCC TUESDAY OCTOBER 11th 4-6pm

There is a proposal to cancel the "Coastal Route" which is the only public transportation to Pt. Reyes from Bolinas. Considering the variety of Bo folk who travel to Pt. Reyes for yoga, restaurants, bank, pharmacy, Dance Palace and more, this appears to be a step in the wrong direction by Marin Transit.

Their complaint: Lack of ridership on that line

Our complaint: Feeble and thus dysfunctional schedule

What we've each done regarding this: They hired a SF firm to survey us West Marinites but only surveyed the riders. Because the Coastal Route is virtually riderless, there was barely a soul to survey from potential users of that line. When the steering committee originally met, four members recommended that the public meeting be held at the Bolinas Community Center instead of at the Stinson Beach CC. The next day we were surprised to receive the flyer announcing that the public meeting was at Stinson. It was evident that there was a lack of awareness as to the nature and numbers of folks in Bolinas who might have an interest in a daily Stagecoach to Pt. Reyes with a more functional schedule. The "Coastal Route" is surely the neglected child of the three stage routes. Supervisor Kinsey is sympathetic and supportive: after we told him of the meeting location fopah, he promptly showed at the meeting in Stinson, after which Marin Transit and the survey company asked us to form a focus group in Bolinas. We put together a group and met up at the Children's Center; it was a diverse cross-section of the Bolinas Stinson community and a healthy number of very motivated stakeholders at that. We came up with a substantial and clear list of recommendations and certainly left there feeling heard and understood, and that our hard work of gathering folks and sharing solid ideas with a clear plan of action would merit at least some headway. Then we received the big color poster announcing the location of the next meeting....at Stinson! We called, flabbergasted. If they were trying to solicit information from the community then why ignore the recommendations of their own steering committee AND their local focus group? They did change the location to BCC but the promotion was too little, too late and only a handful of Bolinas people could make it. Subsequently, the survey company presented their report and recommendations which included adding another weekend day to that route in an effort to capitalize on the heavy tourist numbers. To that end, we have seen no additional day added. While our recommendation was for additional weekday service, we were glad to get even another weekend day and when we advised them to add a bike trailer for the tourist cyclers the idea was immediately slapped down with excuses as to why it would be impossible. What if BCC is full of people at this next meeting? Perhaps they will finally get the message and give the Coastal Route another chance.

The real question is: Would you use the Stagecoach much more if it ran seven days or even five weekdays into Pt. Reyes? Please spread the

MONDAY MORNING WEEK IN REVIEW 10/10/11

JENNIEPFIFR-RILEY RECAP

THE BIG ATTRACTION ON THE MESA, AND AROUND TOWN, is our new Community meeting place, THE TERRACE HOLE. Here is the "Whole, Hole Story" according to what I heard this weekend. They have reached the bottom of the hole! That means they have hit hard enough material to start putting in a foundation for rebuilding the road. Sixty feet seems like a pretty substantial foundation, so that is very intriguing. Then the dirt will start going back in the hole. So now is the time to start thinking about what you might want to put in the hole before it is filled again. I was thinking a Bolinas Time Capsule would be great. But what to put in it? Maybe fill the old Garage-Mahal blue bus with interesting Bolinas items. Think about it.

Monday's HOMEGROWN conversation between Joan Hammerman Robbins and Suzanne Cianni, composer and electronic musician, was a delight. If you haven't yet bumped into Cianni's work, this is a good time to do it. You are in for a treat. She has at least 15 albums out and I'm sure some are in the library, and I know you can find them on line.

Tuesday's special School Board of Trustees retreat was an up close look at our Long Range Plan, particularly a start on the process of examining our administrative model. This is a three year plan, researching best ways to maximize efficiency and minimize cost, and how things might look as employees start contemplating retirement.

Soup Saturday at St. Aidens was very well received and thanks goes out to soup and corn bread makers and to June McAdams for setting things up with help from those in attendance. I understand this is the second one, and hopefully it will continue. Such a lovely idea.

Jerry Bo Jeste's "Inner Woman" (that sounds odd, it's actually his play "Inner Woman") had it's final weekend and feedback has been good. There were some excellent performances. Is there more in store? Hope so.

Happy Birthday to BoBolicious Smoothy Lounge, and congratulations to Julie for making it through the first, most difficult year. It's so nice to have it in town.

Tomorrow is a STAGECOACH meeting, 4-6, at the Bo Community Center, to let your voices be heard regarding the possible ending of Stage service between Bolinas and Pt. Reyes.

And on the National New Front, I just heard that the Mosques and churches and Synagogs are opening their doors for shelter for the Wall Street protesters. I think that's excellent news. in

word about the following meetings...and YES, there is one in Bolinas October 11th 4-6pm!!! Showing up in big numbers might be the only way to make our words count. As we try to make our daily lives lighter on the planet, sharing rides is a viable method, yet it's got to be convenient.

Imagine a bus available to you all day, everyday, into Point Reyes. Would you consider it? What if we could catch it up on the big Mesa? These are some of the recommendations of our Bolinas focus group. Please send me your ideas on how to fill up the BCC on October 11th at 4 pm and let's unify to make this a usable tool before they take it away.

Annypan3@gmail.com

--Annie Owen

BIG HOLE IN BOLINAS

Repair job on Terrace Avenue underway

By Shari Faye Dell

AT A BOLINAS COMMUNITY PUBLIC UTILITY DISTRICT (BCPUD) MEETING IN JUNE, the county unveiled plans to reinforce and rebuild the bluff on upper Terrace Avenue, a road that has been closed since January 2010.

Now entering the third week of excavation, 160 truckloads of material, on average, are moved daily to a temporary storage site on the soccer field at Mesa Park.

Standing on the rim of the massive pit, spectators speculate, "See those trees over there? They are about 120 feet high. If you stood one of those on the bottom, I bet we would be level with the crown," said one.

Appearances can be misleading, however; according to Marin Department of Public Works Principal Civil Engineer Ernest Klock, the construction crew has nearly reached the target of 135 feet above sea level, or 60 feet below the surface. The goal of this bench excavation is to expose the bedrock, allowing access to dig a keyway. The keyway, five to ten feet deep, is the foundational base for layering compacted soil, or soil lifts, between Geogrid fabric, a plastic mesh with very high tensile strength. The layering process continues until ground level is reached, allowing the whole of the repair to act as a unit founded on bedrock.

"Advantages to using this kind of repair is that it is very earth friendly," Klock explained during the June meeting. "We will be using all the existing on-site materials, no concrete hauling and no mining in southern California for lime to make a concrete retaining wall. The finished surface can be replanted so that it looks exactly like it looked before the slide happened."

The June estimate of 50,000 cubic yards of material was readjusted just before construction began. Now approaching the adjusted figure of 20,000 cubic yards, the enormous mounds at Mesa Park appear to be at capacity. If the rains let up, excavation goals could be reached with several more days of digging.

LANDSLIDE

Sand, not soil, comprises all but the topsoil removed from the dig. It is because of the sand that the slide occurred. Standing before a diagram, Klock explained: "The underlying bedrock, this upper sandy mass, is basically sliding on the bedrock. What happens is: rain falls and permeates through that sand, just like on the beach – there is no water build up on the beach, water goes through the sand, hits the bedrock and moves horizontally. So, when all this sandy mass is saturated, it tends to slide on the harder material."

Severe erosion at the site drew county attention as early as 2006. Unable to obtain federal funding at that time, Marin County Department of Public Works even-



EXCAVATOR AND DUMPTRUCK ARE DWARFED BY THE HUGE HOLE THEY DUG IN BOLINAS as part of the repair job on the Terrace Avenue landslide. Photo: Shari-Faye Dell

tually closed the road to vehicular traffic after storms caused severe slumping in 2010. Additional closures were enforced in April of this year. A cyclone fence was installed around the section that became a deeper, broader pit and signage instructed bicyclists and pedestrians to use an alternate route.

Many locals had grown fond of the auto free zone through the sacred Eucalyptus grove, an annual migration layover to Monarch Butterflies, and the iconic Surfer's Overlook with the sweeping view of Bolinas' southern exposed beach, Mount Tamalpais, San Francisco and beyond. While alternative transportation is popular in Bolinas, it turned out this alternative route was not: A cliff-side trail allowed locals to sidestep the barricade.

"Funding was always an issue, so until the board allocated funding to fix it, our hands were tied. Being an engineer here, working for the county, I would love to fix everything, but money drives all the repairs," Klock explained. "Basically, after a storm occurs, the engineering division of public works goes out and assesses the damage. Typically, in larger disasters – state or federally recognized disasters – the county receives state or federal aid, but, in this case, we had not. We approached the board, asking for help, and they allocated money to fix these high priority slides."

MOTIVATION

In conjunction with the County, BCPUD hired a geotechnical engineering firm to explore options to save Surfer's Overlook from erosion and the imminent failure if left unattended. "Having the known failure at [upper] Terrace and the at risk failure of Surfer's Overlook threatened accessibility to 41 homes between those two slides," said Klock. The fact that upper Terrace is an easier, cheaper fix,

requiring fewer studies and permits, led the county to move forward with repairs.

Where to store one acre of soil ten feet high? That was the question in June, but local entities – BCPUD, Bolinas Fire Protection District, and Mesa Park – were able to map out a plan. An agreement was signed, in exchange for resurfacing and reseeded the soccer field at Mesa Park, otherwise known as the Firehouse Park, use of the field was granted through December.

MIXED FEELINGS

Bolinas Fire Chief Anita Brown described safety concerns that can soon be dismissed.

"I am very happy that the county has undertaken this project, being that the majority of our residents live on the mesa and being that Mesa Road (which is now the only road on and off the Mesa) has been closed twice this year. That means no one can get downtown and because the firehouse is on the Mesa, we can't get fire engines downtown. We can't get an ambulance up to residents on the Mesa, so the fact that the county is doing this is a great project. We need both access roads."

Gavi Emunah, a seventh grader at Bolinas-Stinson School said, "Terrace is a safe place to ride bikes and skateboards and it is nice to walk down a road with a view and without cars."

"I feel they could have built a short road through the sewer ponds or the quail preserve with eminent domain, routing traffic from Overlook to Marin Way," said Albert Hollander, a Bolinas resident since 1973. "Then Terrace could be a walking street. The main reason they are doing the repair is so people on Marin Way can have access if Surfer's Overlook fails. I, however, have a home at the foot of terrace. I have enjoyed the street being closed. It has reduced traffic and fumes that I expe-

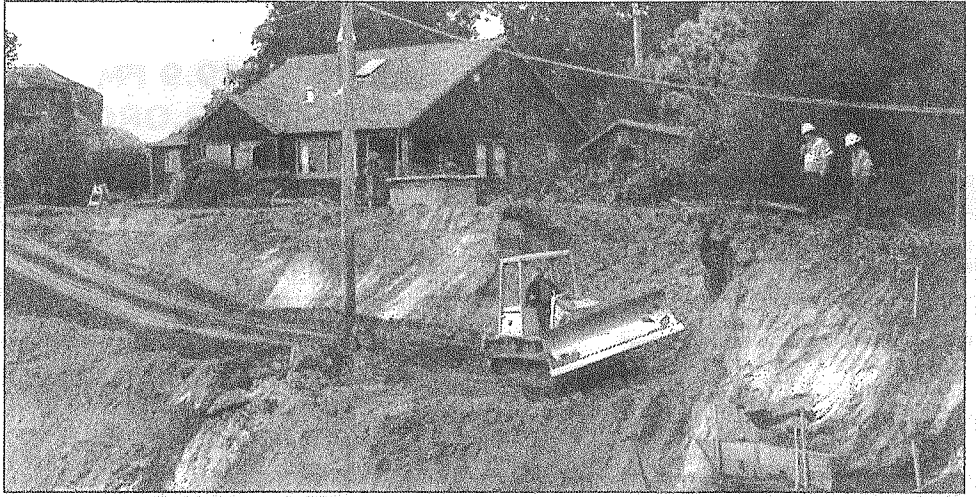
continued next page

rience from the constant flow of traffic. Other people also express their joy at walking unencumbered by automobiles. The road is dangerous -- narrow and there is no soft shoulder."

ON THE EDGE.

Early last week the house on the south-east corner of Overlook and Terrace Avenue still had a picket fence and yard. The house is now perched five feet from the precipice after losing twenty feet of yard to fall in around the dig.

"The contractor is responsible for that damage. We had no intention of going onto private property with the repair, that was the result of the sands being loose in that area and the contractors operation caused that," said DPW's Ernest Klock. "So, Maggiora & Ghilotti is on the hook for that. They are in contact with the property owner and working with them."



THE LITTLE HOUSE ON THE CORNER OF OVERLOOK AND TERRACE lost it's front yard last week after the yard was destabilized by the excavation just inches from the property line. The combination of ground water, sand and a very-steep-30-foot-deep-freshly-dug incline contributed to a rather precarious position.

West Marin Wellness Day

October 12, 2011

3:00 to 6:00 pm

The Dance Palace - 5th & B Streets
Point Reyes Station

FREE

Breast Exams
Examen de Seno

Health Screenings
Servicios de Salud

Free Car Seat Checks
Call 663-8335 for Apt

Fluoride Varnish, Sealants
Enjuague Vocal, Rellenos Dentales

GRATIS

Art Project
Proyecto de Arte

Healthy Food
Comida Saludable

Gratis Acientos de Carro
Llama Para Cita 663-8335

Fire Extinguisher Recharging
Extinguidor De Fuego Recargan

Flu Shots • Bring Insurance Information
Vacunas de la Gripe • Traiga la Informacion de su Aseguranza

Be Well • Este Saludable

The County of Marin, The Dance Palace, Coastal Health Alliance, West Marin Senior Services
West Marin Community Resource Center & Shoreline School Readiness Program
(415) 663-8361

MESA PARK AGENDA MONDAY, OCTOBER 10th, 2011 AT THE FIREHOUSE @ 7pm

Call to Order

COMMUNITY EXPRESSION

DOWNTOWN PARK-status

MAINTAINANCE REPORT

POOL DEVELOPMENT-status

IRRIGATION PROJECT-status

TREASURERS REPORT-status

OTHER

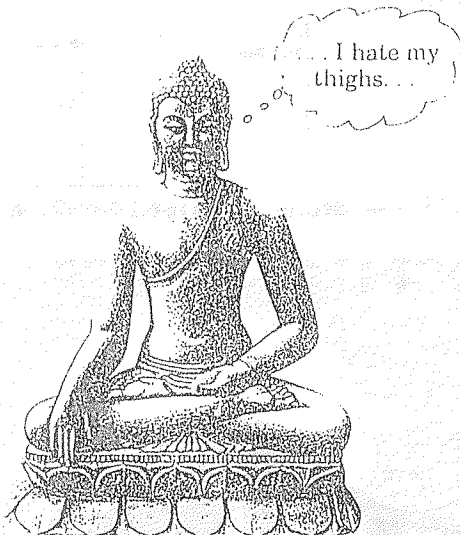
Approve Minutes of Last Meeting

Approve Warrants

Schedule Next Meeting, (November, 14th)

ADJOURN

Kickin' Astral



Little Known Moments in Spiritual History:
The day Buddha's mind wandered off the true path.

THE HEARSAY NEWS IS LOOKING TO GET YOUR NAME AND NUMBER FOR THE NEW LOCAL ZONE PHONE DIRECTORY. We will be at the Post Office the next few weeks for your convenience. Also, you can drop your correct information off at the Hearsay Office on Elm behind the BCPUD, or at Uniquities, either side. You can add cell #'s and e-mail info also if you like. jenniepfeiffer

THREE MORE GREAT THINGS ABOUT THIS PLACE...

(1) Harvest Full Moon coming up Tuesday evening--hope it's clear that night.

(2) The thinning project in the eucalyptus grove by the sewer ponds--lots of chips and fire wood free for the taking. Sign a release form first at the BCPUD.

(3) Draconid meteorites Saturday; also the annual Orionid shower is coming up next Friday.

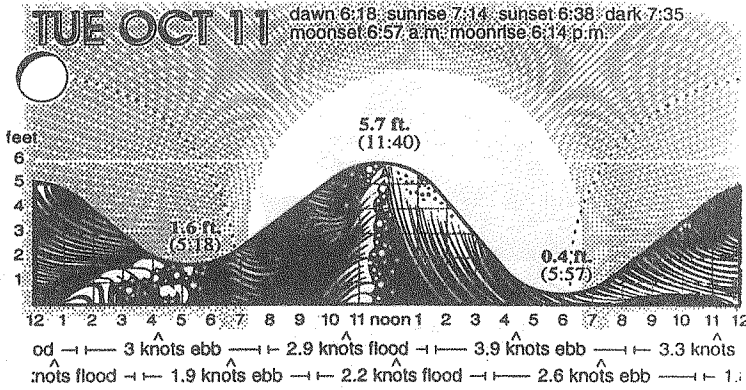
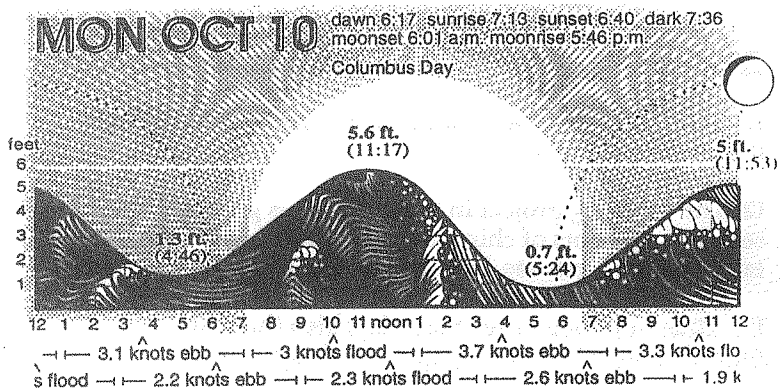
--Ned Riley

90.5 FM / 89.9 FM
WWW.KWMR.ORG

	Mon	Tue	Wed	Thu	Fri	Sat	Sun
6	KWMR Overnight Music	The Weekly Feed 12-1 am	KWMR Overnight Music	Sonic Sunspots to 1:30 am.....then, KWMR Overnight Music	Grateful Dead 1-2 am KWMR Overnight Music	KWMR Overnight Music	KWMR Overnight Music
7	Democracy Now!	Democracy Now!	Democracy Now!	Democracy Now!	Democracy Now!	Morning Glory	Daybreak
8	With Eyes Open	Good Morning West Marin	Hump Day	Morning Blunder	Barrio Vibes	# Gregory DeMascio # Annaka van der Veen # Guest Hosts	# Gregory DeMascio # Annaka van der Veen # Guest Hosts
9	Peter Asmus	Susan Dehdier	Jimmy G Dave Cook	Howard D. Mary S. Charlie D.	Mike Litchfield Amanda Eichstaedt	Augusto Conde	Original Minds Ella Haworth
10	Turning Pages # Janet Robbins # Lyons Filmer	Turning Pages # Neeshama Franklin	Turning Pages # Joy Maultitz # Vinyl Café	Turning Pages # Kerry Livingston	Turning Pages # Bilingual Storytime	Krista Tippett On Being	10 am BirdNote
11	# Park Wavelengths L. Farley # Specials	#1/3 Love is on the Air McGee & Taylor	Making Contact	NEW An Organic Conversation	Nuestros Niños	Viewpoint	The Place We Live
	The Bloncers	#2/4/5 Questing Calpestri & Mickelson	Public Affairs Specials	Helge Hellberg & Mark Mulcahey	Marisol Muñoz-Kiehne	Ellen Shehadeh	Marc Matheson
12	Farm&Foodshed Report Robin Carpenter	New Dimensions Michael&Justine Toms	Alternative Radio David Barsamian	Attune-ment Anthony Wright	Your Own Health and Fitness Layna Berman	Americana Delights	Happy Days Marcia Judelson
1	West Marin Matters #1 Stock #2/4 Gang & Stephan #3/5 Faure-Brac	Spirit & Mind Anthony Wright	A World of Possibilities Mark Semmer	Philosophy Talk Ken Taylor John Perry	Parent Talk Susannah Baldwin Ph.D.	# Will Miner # Guest Hosts	Jazz with Kendrick Rand
2	Cruisein'	What's New?	Classical Wednesday	Classical Thursday	Classical Friday	World Playground	Riverwalk Jazz David Holt and Jim Callum Jr.
3	Rick Clark	#1 Jim & Tammy # Specials/Guest Host	#1/5 Specials #2/4 Norman Masonson #3 Susan Dehdier	# Susan Santiago # Leland Robine	#4 Susanna Henderson #1/2/3/5 Specials	#1/3 Susanna Henderson #2/4 Mark Potts	Vinyl Café Stuart McLean
4	# Aztec Pride Jorge Ramirez	Art of the Song	Julie Metz: #Art's Desire #Tech/Science	TeaTime Books		Circulo musical Jesus Martinez	Rhythm & Muse
	# The Latin Alternative Nerek & Lechner	John Dillon and Vivian Nesbik	#5 Vickie Coastal Airwaves	Mimi Calpestri & Howard Dillon			#1/3 Learnin' Kirven Brian Kirven
5	Morning Shows (repeat) # Raul	Sabrina Arto's Trailer Talk	Open House	Open House #1: Tomas de Immigration	NEW TIME		#2/4 To Hell & Back Beth Underwood
	# Mike Litchfield & Amanda Eichstaedt	# ViewPoint (repeat) Ellen Shehadeh	Spicenter: #1 Pt Reyes Dialogues, Needlaman	Krista Tippett On Being	Happy Hour Liberachs		
6	Trash to Treasure Hope & Schulander	#NEW Feminine Mystic Wendy McLaughlin	#4/5 Coastal Health Alliance, Anna O'Malley			The Celtic Universe	Evening Buffet
			Ridin' the Rails: The Americana Express	Bakersfield & Beyond	NEW TIME	# Loretta Farley # Lyons Filmer	#1/3 Ears Akimbo's Elbow Room Paul Flowerman
7	The Hippie from Olema Jerry Lunsford	Musical Varieté Charlie Morgan	The Roots Gang: Mike V, Amanda, Pat, Will	Amenda & Mike V	Friday Funk Fest Fairfax Funkateer		#2/4 Between Rock and A Jazz Place Grey Shepard
8				Shorty's Sunk house		Rick's Jazz Café	NEW
	Radio Nachi	Silver Dollar Jukebox		Amenda & Mike V		Rick Clark	The Ol' One, Sink Two
9	Nachi Conde Farley	Peter Martinelli	Coast Highway Blues Larry Rippee	Story Hour Hearing Voices	NEW TIME		Patrick Kleeman
		Faultline Radio Jaime Crespo		Offramp Comedy Improv			Aimée Read
10	Mixtape # Something Sound Jacoba Charles				Magic Radio Chris Broyer	Professor Kosmo Plays The Blues	Reggae Radio
		The Latin Alternative	Sonic Sunspots Tony Palmer	NEW MUSIC SERIES Stuck in the Psychedelic Era with the Hermit			DJ Zero
11	# Amateur's Guide to Life Christian Anthony						

Office (415)663-8068

STREAMING on KWMR.ORG Studio (415)663-8492/-8317





HEARSAY NEWS CLASSIFIEDS

To place an ad: come to the office, 270 Elm at Maple, on the left side of BPUD building. Ad forms are in a small mailbox next to door. Fill out form and drop in door slot. If you have included payment please note. Office hours: Monday, Wednesday and Friday between 9:00 & 11:00 am. Call 868-0138 for more info.

FOR SALE

PIANO, UPRIGHT, DECENT CONDITION,
some missing ivory veneer. Was a player piano in the 1920's.
\$300/obo. Must come and get it. 626-6492 KB 11/1

FOR RENT

LARGE 3 BEDROOM, 1911 ARTS & CRAFTS
bungalow downtown. Newly refinished hardwood floors
throughout, fresh paint. Room for two cars in driveway. Great
family house. Available Nov 1st. 626-6492. KB 11/1

HOUSING WANTED

SIXTY-FIVE YEAR OLD SOBER & CLEAN
disabled Jungian psychotherapist/ writer needs 1 bedroom
cabin/cottage for self and house-trained pair of service dogs.
Can pay up to \$1100 per month. Needed presently.
Please call 497-7924. EP 10/14

Need New Home

Can pay \$1,200-No smoking, pets or drama. Quiet, respectful,
Reliably rent paying, Tina-please call-2523
TA 10/31

LOST & FOUND

DOG MISSING: BRINDLE SHEPHERD-GREYHOUND
mix. Her name is Jazz She got out of the gate Thursday night
and lost her tag last week... guessing she is on the Big Mesa!
Please call 415-868-1861 Thanks lia, John & Mikaela 10-7

Honda Keys(with remote lock)

Where: Evergreen between MESA and Poplar
When: Saturday morning, October 8-
Now at: Post Office bulletin board
DR 10/10

LOST AFTER LABOR DAY:

Blue canvas canopy top cover. Did mine go home with yours?
Help me reunite my lonely canopy with its top. Susie -1646
SS9/16.

Surfboard Found

Monday, September 26th on the beach. Please call to describe-
Sandy-0205
SD9/28.

FOUND: A COUPLE WEEKS AGO,

Red bicycle at gate on Alder, between Fern & Evergreen.
Call 96661 to claim.
PB8/10

\$200 Reward-Prescription metal frame ICH
Berlin Sunglasses
RD 8/19

YELLOW SCRAMBLER-TYPE KAYAK

may have drifted off on a high tide. please call 868-9067 with
any info. Thanks
KB 8/3

ANNOUNCEMENTS

Hair cutters/ Stylists/Colorists

@ UNIQUITIES SALON-CALL FOR APPOINTMENTS-
PHILIPPA-259-8277
MARC-463-7136

JP X

The weekly food bank at Bolinas Community Center has been moved from Mondays to Thursdays at 12 noon. Everyone is welcome!
June McAdams for BCC

Please submit articles and requests for on-line subscriptions for the Hearsay News to
hearsaynews@yahoo.com Michael Rafferty



CLASSES

DON'T MISS WHAT'S GOING ON AT THE NEW SCHOOL AT COMMONWEAL!

sign-up free at the newschool@commonweal.org. Download past podcasts at www.commonweal.org/new-school/events.html

NSx



CLASS SCHEDULE 2011

SUNDAY

Yoga w/ Trishna 9:00 - 11:00 a.m.
Jujitsu w/ Julian 7:00 - 8:30 p.m.

MONDAY

Figure Drawing 9:00 a.m. - noon
Pilates w/ Lisa (pre-register 868-0473) 5:30 - 6:30 p.m.

TUESDAY

Yoga w/ Trishna 9:30 - 11:00 a.m.
Aerial Arts for kids w/ Joanna 3:30 - 6:00 p.m.
(Info 868-8821)
Zumba - Latin Dance Fitness w/ Diane 6:30 - 7:30 p.m.

WEDNESDAY

Pilates w/ Lisa 8:30 - 10:00 a.m.
QiGong for Aching Joints w/ Tania 10:30 - 11:30 a.m.
Yoga Basics w/ Trishna 5:00 - 6:15 p.m.
Biblia en Español 8:00 - 9:30 p.m.

THURSDAY

USDA food bank 12:00 noon
Congolese Arts w/ Sandor 6:00-7:30 p.m.

FRIDAY

Pilates Mat Class w/ Lisa 9:00 - 10:00 a.m.

SATURDAY

Back Oct. 22 Yoga w/ James 9:00- 10:30 a.m.
Children's Movement w/ Lisa 11:00 - 11:45 a.m.
(info 868-0473)

Check the marqué by the Library for special events at the Community Center. For Info. 868-2128 or www.bocenter.org

SERVICES

SMILEY'S

SCHOONER SALOON & HOTEL

- INTERNET ACCESS • CHECK CASHING
- WESTERN UNION • ATM & CREDIT CARDS
- COLOR COPIER (B&W too)

41 Wharf Rd., Bolinas 415-868-1311

HANDYMAN: Carpentry, painting, home repair,
Hauling tool 27 years experience. Local refs.
Steve Hill -2310

SHx

Firewood • Hydraulic log-splitting
Chainsawing • Hauling • Dump Runs
Cow Manure • Recycling • Metal Detecting
Humane Animal Removal
Skunk, Raccoon, Opossum & Yellow Jacket
Carl Henry 868-1782 • Cell 259-7222

X

BRUSH TO MEADOW TRANSFORMATION.

Heavy duty tractor mowing/backhoe/roto-tiller/post-hole
drilling/discing/plowing. Don Murch -0921

DMx

TREE WORK Lic • 676399

Fine trimming & removal of large and small trees, brush chipping,
stump removal, hedges and landscape maintenance.
Free estimates / compare prices. Steve Ryan 868-1584 insured.

SRx

AIRPORT? Howard Dillon's fast, comfortable,
car for all BAY AREA pick-ups, early or late.
Many satisfied local refs. Phone 868-2144

MDx

MARITA STEFFE IS AVAILABLE

for your interior decorating needs: casual drapes, roman shades,
pillows, cushions, slipcovers, upholstery, staging, furniture
placement, indoor and outdoor fabrics. 20 years experience.
Check my work maritasteffe.com

MSx

Community Mediation Board
868-0493

Involved in a conflict?

We have trained mediators.
Free, Confidential, Effective

X

The Illusion of Space

making small spaces feel

BIG

architectural renovation
design consultation ... ZAKAS ...868.8818

X

HEALTH & HEALING



**Wellness
Works**

Massage
Health Guidance
Doula Service

Dale S. Johnson

RN, BSN, NP, CMT

Wellspring Center For Healing

3425 Highway 1 • Stinson Beach, CA

415-868-1370 • Cell 415-342-4075 • H 415-868-1578

X

June McAdams, RN

Compassionate and Skilled

Hospice Care Home Care

Newborn to Elders

Coastal Marin Only

More than 39 years nursing experience

(415) 868-9052



**TAI CHI: HARMONY
IN THE ART OF LIFE**

- Balance Polarities
- Personal Instruction

www.TaiChiNature.us

415-669-9720

CA 10/30



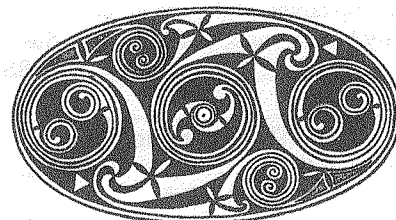
WANTED,

Wanted MacBook-partial trade for PC?
Una 8818

UZ x

Dirt bike wanted-100cc or smaller
I don't have much money, but I love to ride.
wilie.brown109@gmail.com. Thanks!

WB 10/14



hearsaynews@yahoo.com

Submit articles and drawings by midnight
for publication the next day. Request a link
to the password-protected website. Thank
you.

-- Michael Rafferty, Online Editor